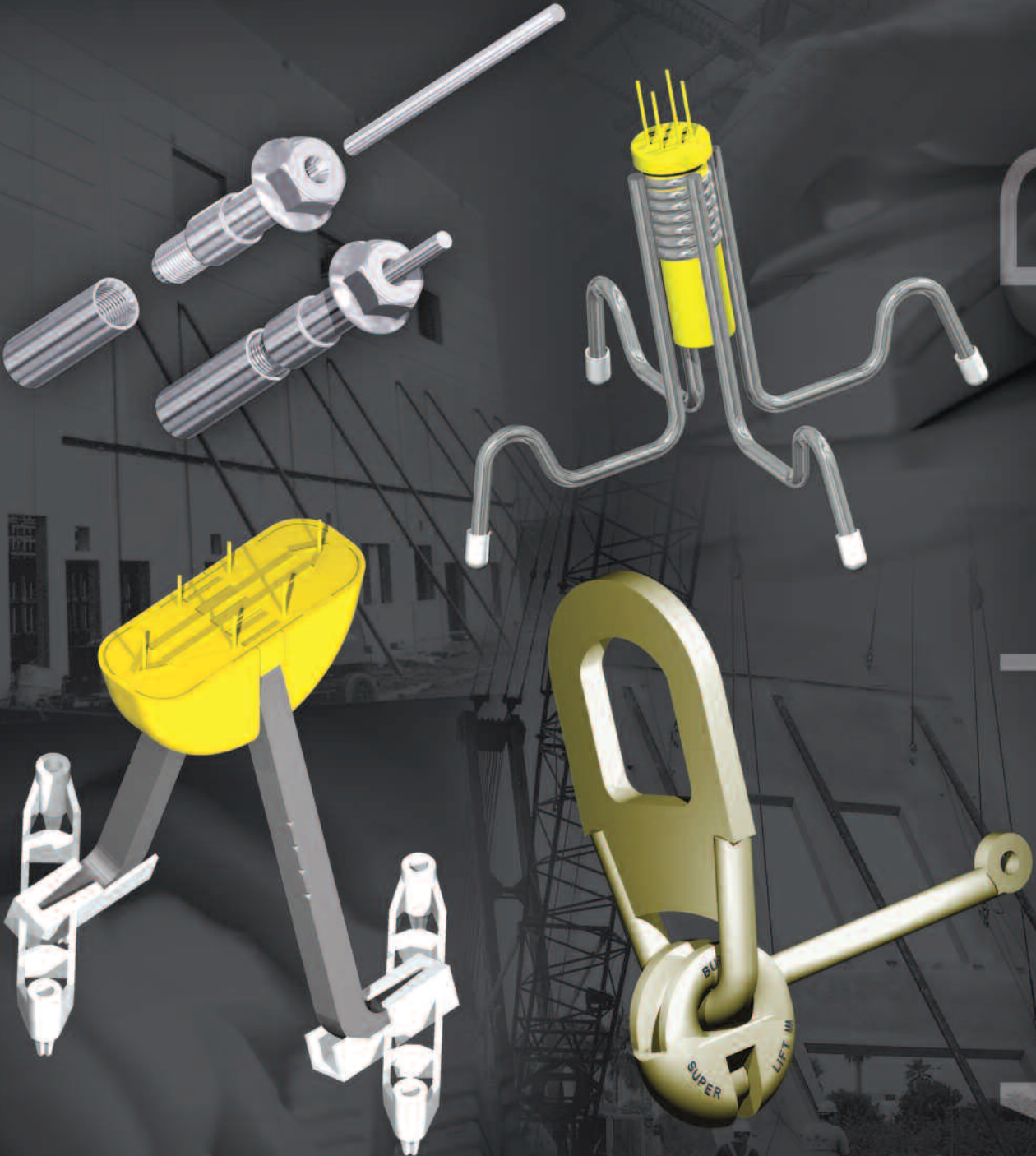
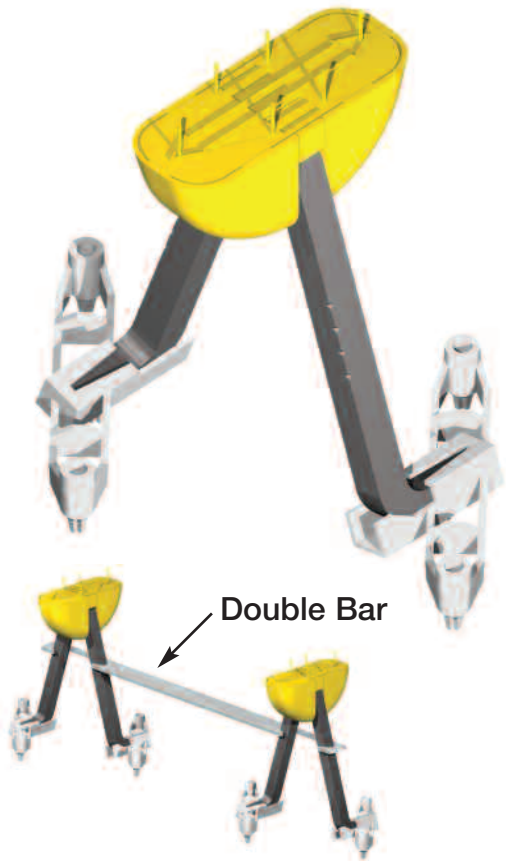


Super Lift III System



Super-Lift III System



Tilt-Up Insert - The Meadow Burke Super-Lift III Tilt-Up Insert (patented) with a maximum lifting capacity of 22,400 lbs. (2.5:1 factor of safety) is capable of safely lifting more than any other tilt-up insert in the marketplace. The Meadow Burke Super-Lift III Tilt-Up Insert is sold assembled and ready to use with void-former and base attached. See Engineering Data Sheet for working loads in various panel thicknesses. An oval void requires minimum patching. The Meadow Burke Super-Lift III Tilt-Up Insert also has notches for rebar tying. An easy to use Meadow Burke Double Bar (patented) is available for double insert requirements.

ITEM NUMBER	NOMINAL PANEL THICKNESS	UNIT WEIGHT (LBS)	ITEM NUMBER	NOMINAL PANEL THICKNESS	UNIT WEIGHT (LBS)
45SL3050	5"	1.50	45SL3085	8-1/2"	2.40
45SL3052	5-1/4"	1.60	45SL3090	9"	2.50
45SL3055	5-1/2"	1.70	45SL3092	9-1/4"	2.50
45SL3060	6"	1.70	45SL3095	9-1/2"	2.60
45SL3062	6-1/4"	1.80	45SL3100	10"	2.70
45SL3065	6-1/2"	1.90	45SL3102	10-1/4"	2.80
45SL3070	7"	2.00	45SL3110	11"	2.90
45SL3072	7-1/4"	2.10	45SL3112	11-1/4"	3.00
45SL3075	7-1/2"	2.10	45SL3120	12"	3.20
45SL3080	8"	2.20	45SL3990	DOUBLE BAR	1.20
45SL3082	8-1/4"	2.30			

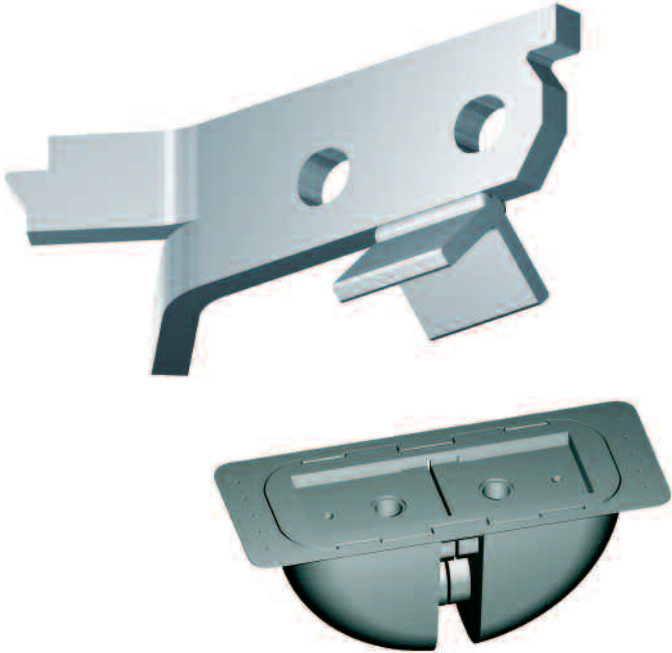
Clutch - The Meadow Burke Super-Lift III Clutch (patented) has a safe lifting capacity of 22,400 lbs. (5:1 factor of safety). The industry proven Meadow Burke clutch assembly was developed with a high strength casting and a forged handle which has been lengthened, to make for safer lifts and easier ground releases. The oval cross section prevents clutch rotation during handling, lifting and release. The Meadow Burke Super-Lift III Clutch is sold with chain and lanyard attached ready for job site use. There are no moving parts to bind against the concrete during engagement and release. The Meadow Burke Super-Lift III Clutch and Meadow Burke Super-Lift III Insert combine to provide the strongest, simplest, and safest lifting system available in the market today.



ITEM NUMBER	PRODUCT DESCRIPTION	UNIT WEIGHT (LBS)
45803	SUPER-LIFT III RING CLUTCH ASSEMBLY	21.7

MeadowBurke

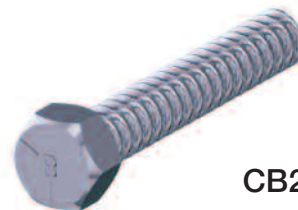
Super-Lift III System



Edge Lift Insert - The Meadow Burke Super-Lift III Edge Lift Insert (patent pending), specially engineered for use with the Meadow Burke Super-Lift III Clutch, gives the contractor a “no spall” solution to edge lifting panels. The attached shear plate reduces job site labor and the chance of installing an insert without a shear bar. The insert comes complete with a disposable void. Easy to install, the Meadow Burke Edge Lift Insert Void may be easily nailed to wooden forms.

ITEM NUMBER	PRODUCT DESCRIPTION	UNIT WEIGHT (LBS)
45SL3995	SUPER-LIFT III EDGE LIFT INSERT	6.0
45SL3997	SUPER-LIFT III EDGE LIFT INSERT VOID	0.08

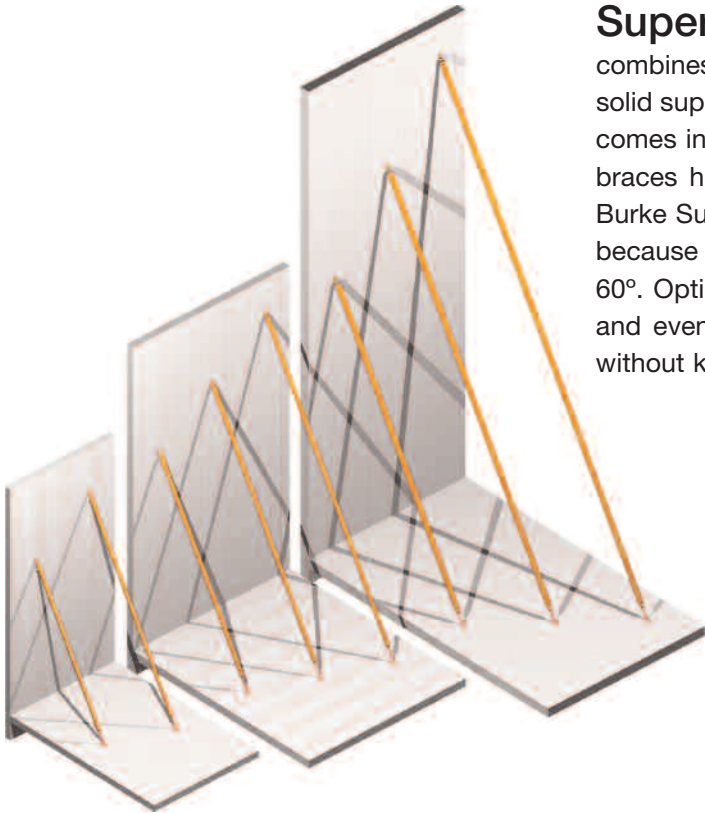
B-75 Wall Brace Insert - The Meadow Burke B-75 Wall Brace Insert with the Meadow Burke E-See Cap (patented) for easy location is specifically designed to be used when casting tilt-up panels. The Meadow Burke B-75 Wall Brace Insert comes either for casting with the brace side up or inverted for the brace side down. Also available is the Meadow Burke 3/4" X 4" CB2 Coil Bolt for making the brace connection.



CB2 coil bolt

ITEM NUMBER	NOMINAL PANEL THICKNESS	UNIT WEIGHT (LBS)	ITEM NUMBER	NOMINAL PANEL THICKNESS	UNIT WEIGHT (LBS)
B75040	4"	0.70	B75092	9-1/4"	1.10
B75050	5"	0.80	B75095	9-1/2"	1.10
B75060	6"	0.80	B75100	10"	1.20
B75062	6-1/4"	0.90	B75105	10-1/2"	1.20
B75065	6-1/2"	0.90	B75110	11"	1.20
B75070	7"	0.90	B75112	11-1/4"	1.30
B75072	7-1/4"	1.00	B75115	11-1/2"	1.30
B75075	7-1/2"	1.00	B75120	12"	1.30
B75080	8"	1.00	B1175	Inverted Insert	1.00
B75082	8-1/4"	1.00	B1G75	Floor Slab Insert	1.80
B75085	8-1/2"	1.10	18044	CB2 3/4"X4" COIL BOLT	0.60
B75090	9"	1.10			

Super-Lift III System



Super Braces - The Meadow Burke Super Brace combines high strength with light weight for easy handling and solid support of tilt-up panels. The Meadow Burke Super Brace comes in several different lengths, 32', 22', and 17' with some braces having optional extensions. The fixed length Meadow Burke Super Brace can support a wide range of panel heights because you can vary the angle of the brace between 45° and 60°. Optional extensions can create brace lengths of 27', 42' and even 52' which can safely brace panels that are 76' tall without knee bracing.

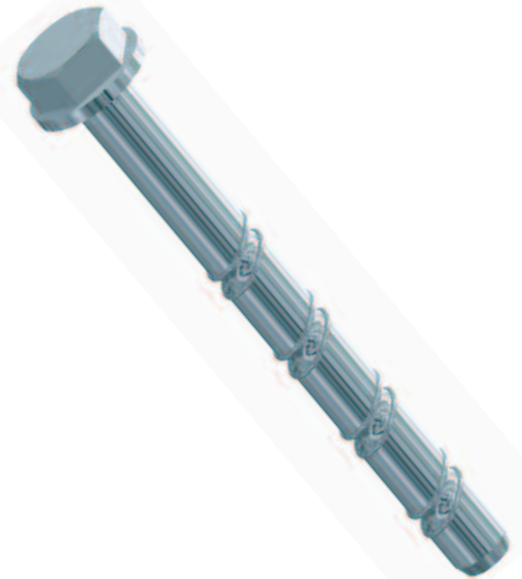
ITEM NUMBER	BRACE OR EXTENSION DESCRIPTION	UNIT WEIGHT (LBS)
45201	SUPER 32' BRACE	270.0
45290	10' EXTENSION FOR 32' BRACE	118.0
45202	SUPER 22' BRACE	136.0
45275	5' EXTENSION FOR 22' BRACE	63.0
45270	10' EXTENSION FOR 22' BRACE	88.0
45280	SUPER 17' BRACE	100.0
#45218HD	MB Precast Brace HD	58.0

Super Bolt - The Meadow Burke Super Bolt safely and economically secures tilt-up braces to the slab without the inconvenience or uncertainty of cast-in-place inserts or expansion bolts. Super Bolt penetrates through the slab to engage the concrete at top and bottom in a vise like grip. Pullout strength is equivalent to a cast-in-place insert without the problems of locating inserts and adjusting braces while the crane and crew wait. Convenience combines with economy in this reusable system. Nothing is left in the slab or wasted. When bracing is no longer needed, simply disengage the brace, pry up the wedge and lift out. The entire system can be used over and over again. Quality materials guarantee strength and durability. The bolt section is a high tensile strength steel forging. The wedge is high strength cast ductile iron. Together they provide consistent safety and dependability.

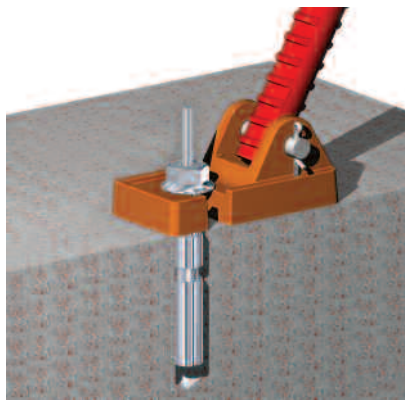


ITEM NUMBER	MINIMUM/MAXIMUM FLOOR THICKNESS	UNIT WEIGHT (LBS)
45SBS	3-1/2" TO 7-1/2" THICK	3.2
45SBL	5-1/2" TO 11-1/2" THICK	3.3

MB Brace Bolt - The Meadow Burke Brace Bolt safely and economically secures tilt-up braces to the slab without the inconvenience or uncertainty of cast-in-place inserts or expansion bolts. Pullout strength is equivalent to a cast-in-place insert without the problems of locating inserts and adjusting braces while the crane and crew wait. Convenience combines with economy in this reusable system. Nothing is left in the slab or wasted. When bracing is no longer needed, simply disengage the brace and remove bolt. It can be used over and over again. Quality materials guarantee strength and durability.



MB Slam Anchor - The original Meadow Burke Slam Anchor. The Tilt-Up construction industry has long awaited the arrival of the most heralded brace-to-floor connection solution in recent years. The MB Slam Anchor was designed to address the shortcomings of existing brace-to-floor connectors.

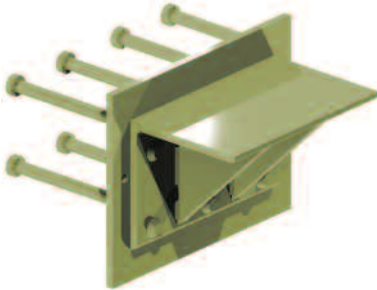


Strength: The objective was simply to create a brace-to-floor connection that will handle the maximum applied brace loads (9,000 lbs.) with a single bolt. **Simplicity and Safety:** We recognize that current brace-to-floor connections used in the field today can easily be improperly installed, resulting in serious safety hazards. Another objective with the Slam Anchor was to insure a virtually foolproof installation. **Speed:** We know time is money. And with crane and crew waiting, we know that speed of installation is paramount. **No Torque or Re-tightening Required:** The unique expansion mechanism is not a threaded connection, and therefore does not have a torque requirement and does not need to be re-tightened. **Economical:** In addition to the savings in labor, the Slam Anchor is designed to be reusable. Only a small drop-in is expended at each use. We are confident that the Slam Anchor will be the brace-to-floor connection solution.

Super-Lift III System

The Rapid-Lok Connection Plate System Gen II

Primary Types of Assemblies:



The Bearing Angle Assembly:

Rapid-Lok assembly, consisting of an Embed Plate and a Bearing Angle.



The Bearing Corbel Assembly:

The newest Rapid-Lok Assembly is used to improve the aesthetics, while being capable of reaching a 2-hour fire rating if required. The assembly consists of an Embed Plate and a Bearing Corbel.

The Primary Assembly Components:

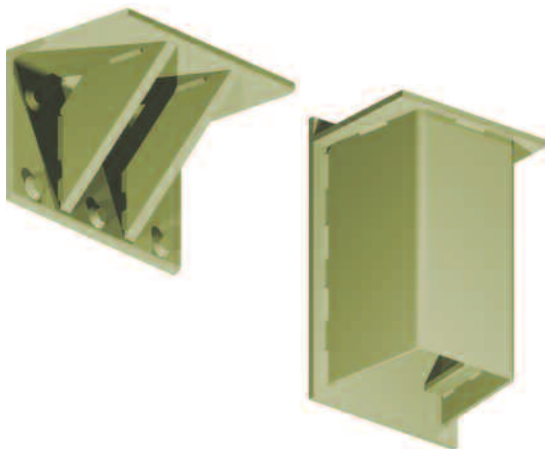


Embed Plate

The Embed Plate consists of a flat (ASTM A36) steel plate with headed studs welded to the back for embedment. Stud pattern and sizes have been engineered for optimal performance. The keyhole shaped slots are used to make a rapid connection of the Bearing Angle or Bearing Corbel to the Embed Plate. The new "Bearing Point" locators have been improved to "Diamond Holes" that are visible from either side, even after galvanizing. The SWL is applied to the front of all steel components for easy identification after installation.

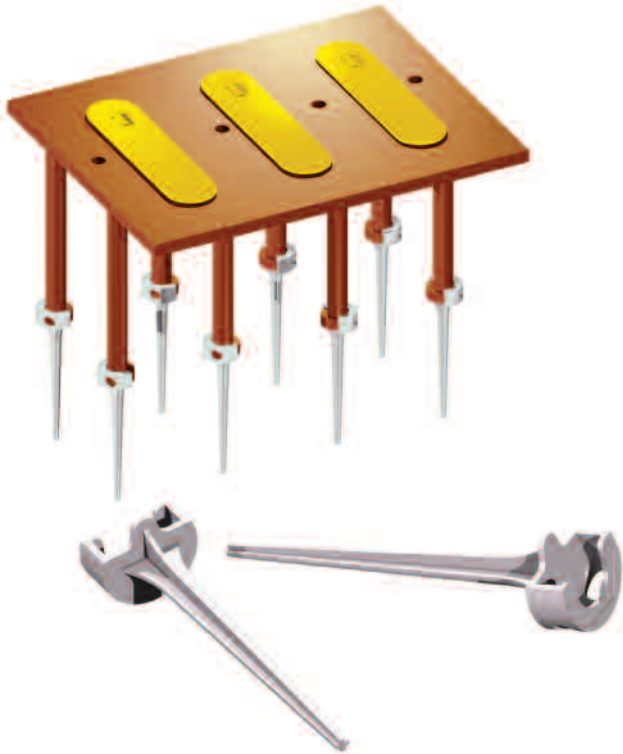
The Void Former

The Void Former is a plastic box which fits into the keyholes and secured into place with new locking stems. This creates a voided area free of concrete behind the Embed Plate and permits the attachment of the Bearing Angle or Bearing Corbel without interference.



The Bearing Angle and Bearing Corbel

The Bearing Angle and Bearing Corbel are engineered with interlocking Super Studs, allowing them to be securely connected to the Embed Plate without bolts or welding. The studs are specially treated and have been "cold tested" to insure strength, durability and cold weather performance. In addition, when using the Corbel unit, insulation and a bottom cover plate can be factory installed to increase the fire rating from 1-hour to 2-hour. Optional covers can also be added before or after final installation without the insulation to improve the overall appearance when viewed from below.



MB Stud Extender - The MB Stud Extender is designed as an adjustable height support chair for embed/weld plates.

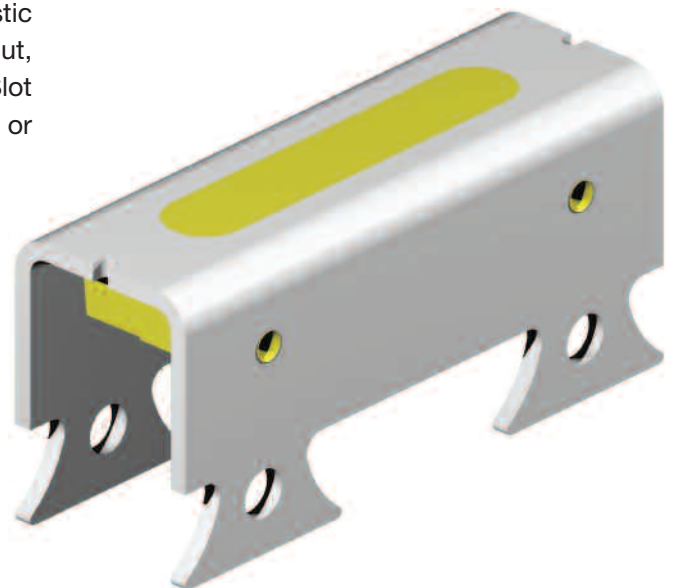
The stud extender eliminates the tedious, labor-intensive wood forming or "wet setting" of embed plates in the top-face concrete panel surface.

Stud Extender Advantages:

- easy to use
- eliminates wood forming
- saves time
- saves materials
- a neat, clean, professional look
- screed and finish panels easily

The MB Stud Extender is a simple, easy to use solution for setting weld plates. This easy top use product is inexpensive, yet produces enormous savings in time and materials.

Burke Slot Insert - The Burke Slot Insert (patented), available in 2", 3", and 4" depths has been designed to provide the most advanced adjustable insert in the market today. The Burke Slot Insert features a unique sealed plastic void. The void comes with the choice of either 3/4" N.C. nut, 3/4" coil nut, or empty for use with a strap. All Burke Slot Inserts and Burke Slot Straps are available in either mill or galvanized (G).



ITEM NUMBER	PRODUCT DESCRIPTION	UNIT WEIGHT (LBS)
79621W (G)	2" DEPTH FOR STRAP	1.4
79621B (G)	2" DEPTH 3/4" COIL NUT	1.6
79621Y (G)	2" DEPTH 3/4" N.C. NUT	1.6
79631W (G)	3" DEPTH FOR STRAP	2.1
79631B (G)	3" DEPTH 3/4" COIL NUT	2.3
79631Y (G)	3" DEPTH 3/4" N.C. NUT	2.3
79641W (G)	4" DEPTH FOR STRAP	2.8
79641B (G)	4" DEPTH 3/4" COIL NUT	3.1
79641Y (G)	4" DEPTH 3/4" N.C. NUT	3.1
79604 (G)	4" STRAP	1.0
79606 (G)	6" STRAP	1.5
79608 (G)	8" STRAP	1.9
79610 (G)	10" STRAP	2.3
79612 (G)	12" STRAP	2.7

Super-Lift III System

Strongback and Inserts

The Meadow Burke Super Strongback has been designed by Meadow Burke Engineering to provide the contractor with a strongback system that is one-third lighter and one-third better at resisting deflection than conventional 8" double channel strongbacks. Full-moment splices offer versatility and convenience. See Engineering Data Sheet for technical information. Available in 5', 10' and 20' lengths. Meadow Burke Super Strongback Inserts are 3/4" and 1-1/4" diameter coil insert and are available with a Doubler Rod (patented) for simplified installation.



ITEM NUMBER	PRODUCT DESCRIPTION	UNIT WEIGHT (LBS)
45105	5' STRONGBACK	77.00
45110	10' STRONGBACK	153.0
45120	20' STRONGBACK	306.0
45100	STRONGBACK SPLICE	62.0

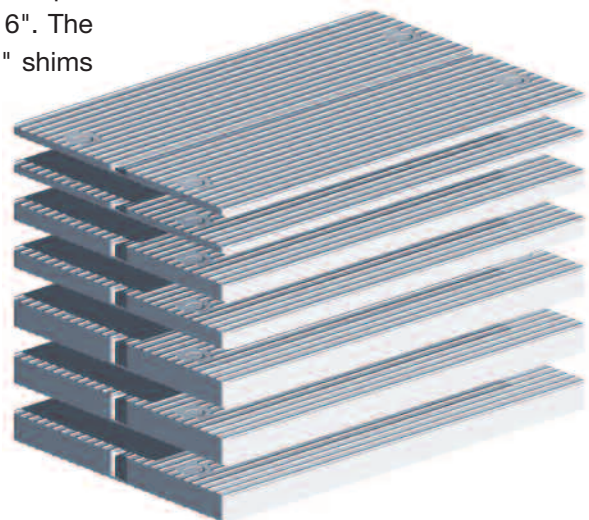
Single Coil Inserts - 1-1/4"

ITEM NUMBER (INSERT)	NOMINAL PANEL THICKNESS	UNIT WEIGHT (LBS)
BL150	5"	1.9
BL155	5-1/2"	2.0
BL160	6"	2.0
BL165	6-1/2"	2.1
BL170	7"	2.1
BL175	7-1/2"	2.2
BL180	8"	2.2
BL185	8-1/2"	2.3
BL190	9"	2.3
BL195	9-1/2"	2.4
BL110	10"	2.4
BL105	10-1/2"	2.5
BL111	11"	2.5
BL115	11-1/2"	2.6
BL120	12"	2.7
BL990	DOUBLER ROD	.5

Super Shims

The Meadow Burke Super Shim is extruded from high impact rigid plastic with a compressive strength of 8,000 psi. They make excellent bearing material. Meadow Burke Super-Lift III Super Shims are specially serrated to eliminate slipping of tilt-up panels. Shims may be purchased in a pack or individually by size. Each Meadow Burke Super Shim Pack contains three shim sizes for a total thickness of 1-1/16". The Meadow Burke Super Shim Pack contains: (3) 1/4" shims, (2) 1/8" shims and (1) 1/16" shim.

ITEM NUMBER	PRODUCT DESCRIPTION	UNIT WEIGHT (LBS)
45607	SUPER SHIM: 1/16" THICK	0.05
45608	SUPER SHIM: 1/8" THICK	0.10
45609	SUPER SHIM: 1/4" THICK	0.20
45604	SUPER SHIM PACK	0.90



Super Patches - The Meadow Burke Super Patch (patented) is the modern method to permanently and aesthetically cover insert holes on tilt-up panels. There's no need to waste time and money on mortar-mix patches when the Meadow Burke Super Patch can do the same job in less time, with unskilled labor, and at a lower overall cost. The Meadow Burke Super-Lift III Super Patch is available for the Meadow Burke B-75 Wall Brace Insert and the Meadow Burke Super-Lift III Super Brace Inserts. They both are grey with concrete-texture finish which allows blending into the panel surface.



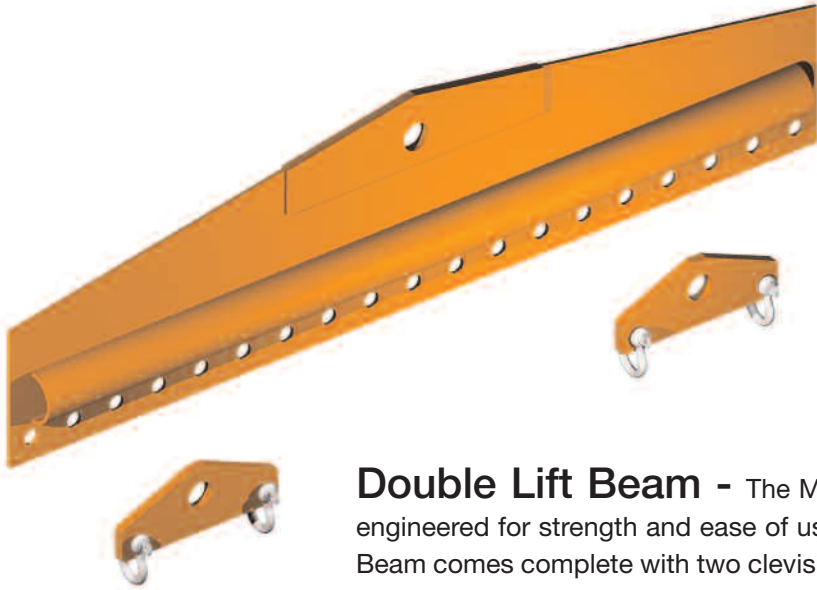
ITEM NUMBER	PRODUCT DESCRIPTION AND PATCH DIAMETER	UNIT WEIGHT (LBS)
45612	SUPER PATCH / 8" DIAMETER	0.29
45611	B75 PATCH / 3" DIAMETER	0.05

Super Chair - The Meadow Burke Super Chair. Safer, stronger and simpler. For use in Architectural Precast and Tilt-up Panels, the superior strength of the MB Super Chair provides weight capacity several times stronger than standard chairs. The innovative design of the MB Super Chair allows for excellent concrete flow promoting superior consolidation. And its near invisible footprint makes the Meadow Burke Super Chair the ideal choice for quality-minded builders.



ITEM NUMBER	SIZES	QTY/CTN
214075	3/4"	1,500
214100	1"	1,000
214125	1-1/4"	900
214150	1-1/2"	700
214175	1-3/4"	650
214200	2"	500
214225	2-1/4"	400
214250	2-1/2"	350
214275	2-3/4"	500
214300	3"	400
214325	3-1/4"	400
214350	3-1/2"	400
214375	3-3/4"	400
214400	4"	400
214425	4-1/4"	400
214450	4-1/2"	400
214475	4-3/4"	300
214500	5"	250
214525	5-1/4"	250
214550	5-1/2"	250
214575	5-3/4"	200
214600	6"	190
214625	6-1/4"	190
214650	6-1/2"	190
214675	6-3/4"	190
214700	7"	160

Super-Lift III System

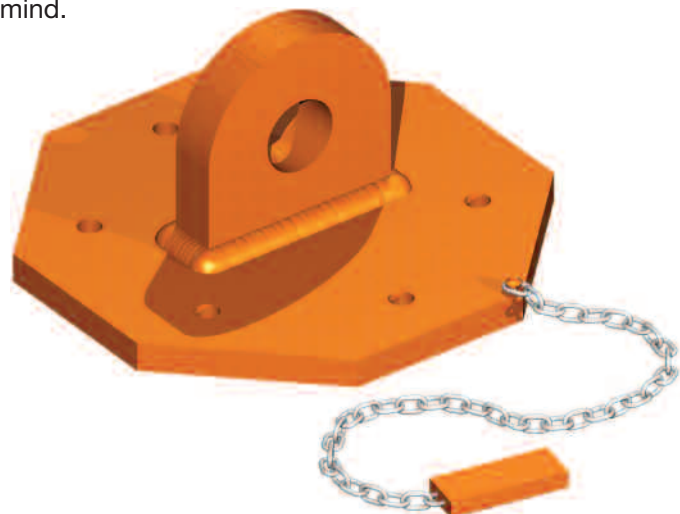


ITEM NUMBER	PRODUCT DESCRIPTION	UNIT WEIGHT (LBS)
45500	DOUBLE-LIFT BEAM	58.0

Double Lift Beam - The Meadow Burke Super-Lift III Double Lift Beam is engineered for strength and ease of use. The Meadow Burke Super-Lift III Double Lift Beam comes complete with two clevises for attaching standard Meadow Burke Super Lift III Clutches. Simply unscrew the bolt in the clevis, insert the clevis in the Clutch bail and screw the bolt back into the clevis. The Meadow Burke Super-Lift III Double Lift Beam has a safe lifting capacity of 32,000 lbs. with a 5:1 safety factor and the design eliminates the need for specially fabricated clutches.

Lift-It Plate - The Meadow Burke Super Lift-It Plate has been designed by Meadow Burke Engineering for the Meadow Burke Super-Lift III load range to provide a safe method for lifting a panel which has a misplaced or displaced insert. The Meadow Burke Super-Lift III Lift-It Plate comes complete with six 3/4" diameter taper bolts, gage chained to the plate and instructions for use. The Meadow Burke Super-Lift III Lift-It Plate has been designed with the contractor in mind.

ITEM NUMBER	PRODUCT DESCRIPTION	UNIT WEIGHT (LBS)
45800	LIFT-IT PLATE	34.0



Burke Bars - The original Burke Bar and Burke Bar Jr. both have a curved blade which has been engineered for more leverage than competitors. The blade is heat treated for maximum strength. Both sizes can be very useful on job sites, “the right tool for the right job”. The Burke Bar and Burke Bar Jr. are designed for the tilt-up contractor to make jobs quicker and easier.



ITEM NUMBER	PRODUCT DESCRIPTION (LENGTH)	UNIT WEIGHT (LBS)
17615	BURKE BAR (48")	15.0
17915	BURKE BAR JR. (42")	7.0



Engineering - In addition to designing the Meadow Burke Super-Lift III System components, Meadow Burke Engineering has incorporated the features of Super-Lift III in their analysis for tilt-up erection engineering. Meadow Burke engineers use state-of-the-art computer analysis and innovative techniques to minimize the panel lifting stresses, keeping added erection reinforcing to a minimum, saving you time and money. Meadow Burke has over 4,000,000 panels safely lifted. Meadow Burke provides computer generated scaled panel drawings that are accurate, with all information clearly shown. The cable and spreader bar lengths are shown on each detail sheet to eliminate guesswork and increase safety. Brace requirements and dimensions are also indicated on each panel detail to speed layout and reduce field error. The erection engineering can be customized to fit your project needs and erection preferences. Meadow Burke Engineering continues to be the “tilt-up technology leader”.

Innovating Concrete Construction

TILT-UP ENGINEERING SERVICE CENTERS

866-730-2904 • Tiltup@MeadowBurke.com

LOS ANGELES

280 N. Montebello Blvd,
Suite 102
Montebello, CA 90640
(323) 725-0007
(800) 804-6565
FAX: (323) 725-0072

SACRAMENTO

231-A Lathrop Way
Sacramento, CA 95815
(916) 920-2876
FAX: (916) 648-1399

SAN ANTONIO

8521 FM 1976
Converse, TX 78109
(210) 658-4671
(800) 423-9140
FAX: (210) 658-8312

TAMPA

531 South U.S. Hwy 301
Tampa, FL 33619
(813) 248-1944
(877) 518-7665
FAX: (813) 248-5409

SERVICE CENTERS

ANAHEIM

3611 East La Palma Ave.
Anaheim, CA 92806
(714) 632-6651
(800) 804-6565
FAX: (714) 632-9412

CINCINNATI

8760 Global Way, Bldg. 1
West Chester, OH 45069
(513) 942-0268
(866) 773-0536
FAX: (513) 942-3562

JACKSONVILLE

5918-1 Lane Circle S.
Jacksonville, FL 32254
(904) 786-9802
(800) 786-9802
FAX: (904) 695-9204

PHOENIX

501 N. 37th Drive
Suite 106-109
Phoenix, AZ 85009
(602) 455-0717
(800) 817-9698
FAX: (602) 455-0719

ATLANTA

2995 East
Ponce De Leon Ave.
Decatur, GA 30030
(404) 378-3175
(800) 241-5662
FAX: (404) 373-1804

FT. LAUDERDALE

11600 Miramar Pkwy.
Suite 200
Miramar, FL 33025
(954) 437-7366
(800) 771-7250
FAX: (954) 437-1494

LIVERMORE

6144-A Industrial Way
Livermore, CA 94551
(925) 245-0738
(877) 225-1277
FAX: (925) 245-1104

SAN ANTONIO

8521 FM 1976
Converse, TX 78109
(210) 658-4671
(800) 423-9140
FAX: (210) 658-8312

BOSTON

30 Manning Road
Billerica, MA 01821
(978) 663-5417
(866) 663-5417
FAX: (978) 663-5418

FT. WORTH

7000 Will Rogers Blvd.
Ft. Worth, TX 76140
(817) 293-9641
(800) 993-9641
FAX: (817) 293-8081

NEW JERSEY

269 Commercial Avenue
Palisades Park,
NJ 07650
(201) 242-8989
(800) 207-7778
FAX: (201) 242-8860

TACOMA

9403 43rd Ave. Ct. SW #C
Lakewood, WA 98499
(253) 983-0683
(877) 289-2113
FAX: (253) 983-0684

CHARLOTTE

2320 North
Davidson Street
Charlotte, NC 28205
(704) 376-9192
(800) 376-9192
FAX: (704) 376-6939

HAZLETON

RR1 - Humbolt
Industrial Pk.
565 Oak Ridge Road
Hazleton, PA 18201
(570) 384-3063
FAX: (570) 384-3649

NEW ORLEANS

4126 Poche Court West
New Orleans, LA 70129
(504) 254-1631
(800) 254-1631
FAX: (504) 254-0283

TAMPA

5110 Santa Fe Road
Tampa, FL 33619
(813) 248-1945
(800) 282-7213
FAX: (813) 248-0703

CHICAGO

5645 W. 31st Street
Cicero, IL 60804
(708) 656-8661
(800) 621-7443
FAX (708) 656-8669

HOUSTON

4555 Airline Dr., #100
Houston, TX 77022
(713) 692-8844
(800) 727-3227
FAX: (713) 692-8855

ORLANDO

4492 SW 36th Street
Orlando, FL 32811
(407) 246-1210
(866) 363-3008
FAX: (407) 246-1910

VIRGINIA

8192 Newington Rd.
Lorton, VA 22122
(703) 550-0060
(800) 550-0060
FAX: (703) 339-6228